

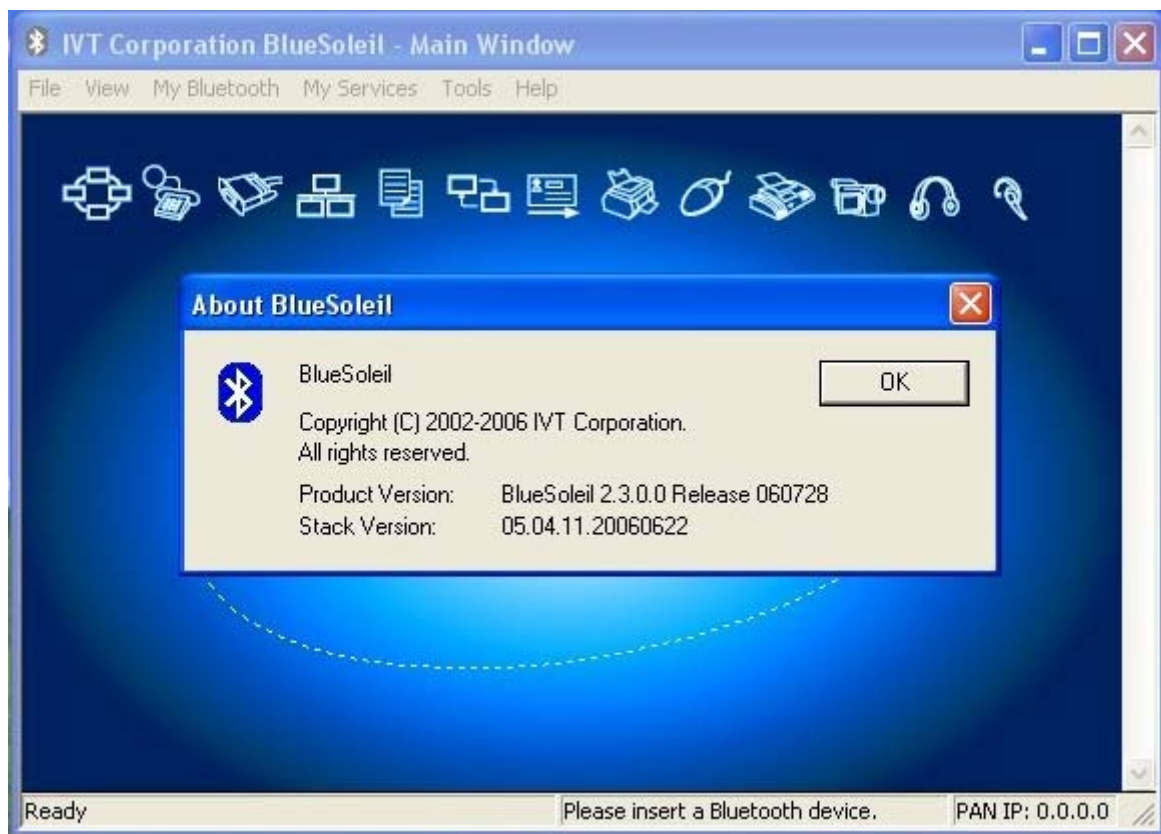
Setup of Bluetooth with BlueSoleil

It seems that in our days most of the Bluetooth sticks come with the Bluetooth manager software **BlueSoleil**. Herein a step by step introduction shall be given, on how to setup a connection with the PTC-IIusb, so that terminal programs can communicate with it via Bluetooth.

The software is on a CD that comes together with the Bluetooth stick and is to be installed before the stick is plugged in.

After the installation it is recommended to check which version it has been delivered with the stick. The actual version is 2.3. If the manufacturer has supplied an older version, it is recommended to de-install this old version again and to download the most recent version from the homepage of the **BlueSoleil** creators **IVT**:

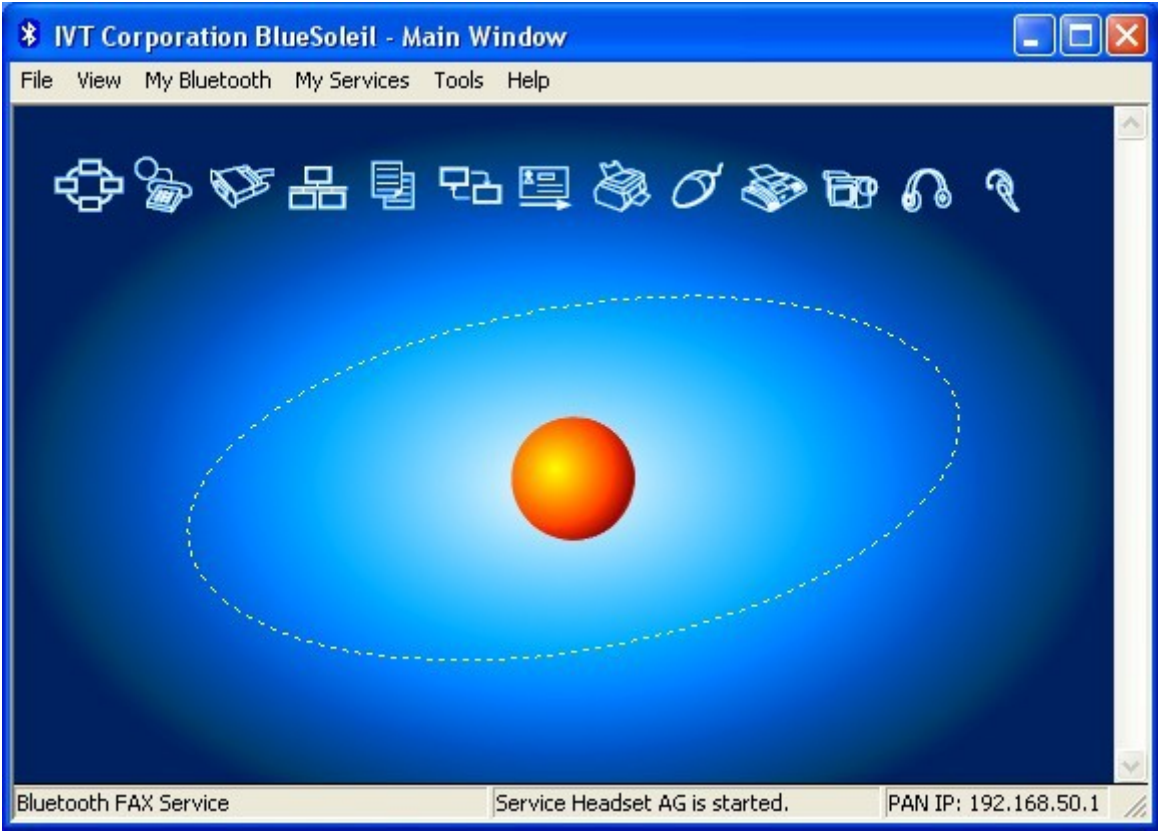
<http://www.ivtcorporation.com/download/>.



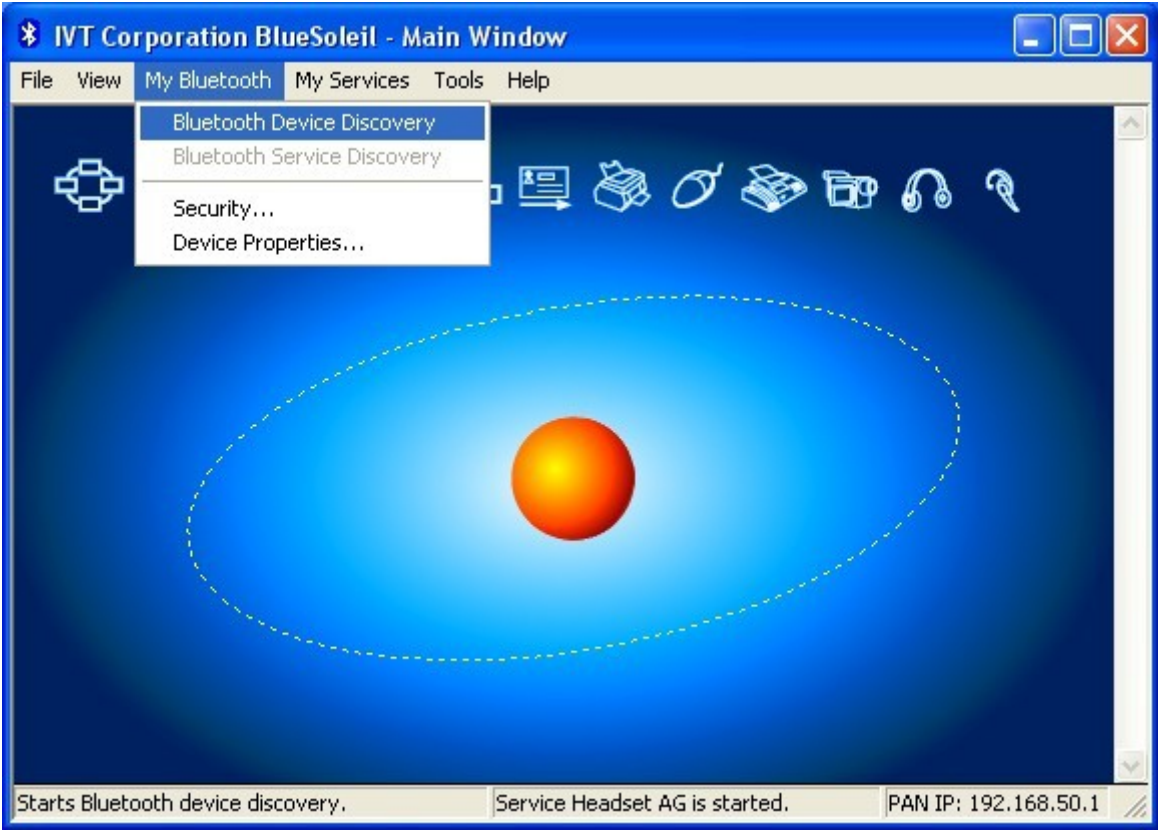
This picture shows the version information. You find it in the **Help** menu.

Der PTC-IIusb should now be switched on, whereby the USB cable shall **NOT** be plugged in. After some time only the center LED of the PTC-IIusb's tuning display will be on. All other LED's are off. The modem is now ready to accept connects via Bluetooth.

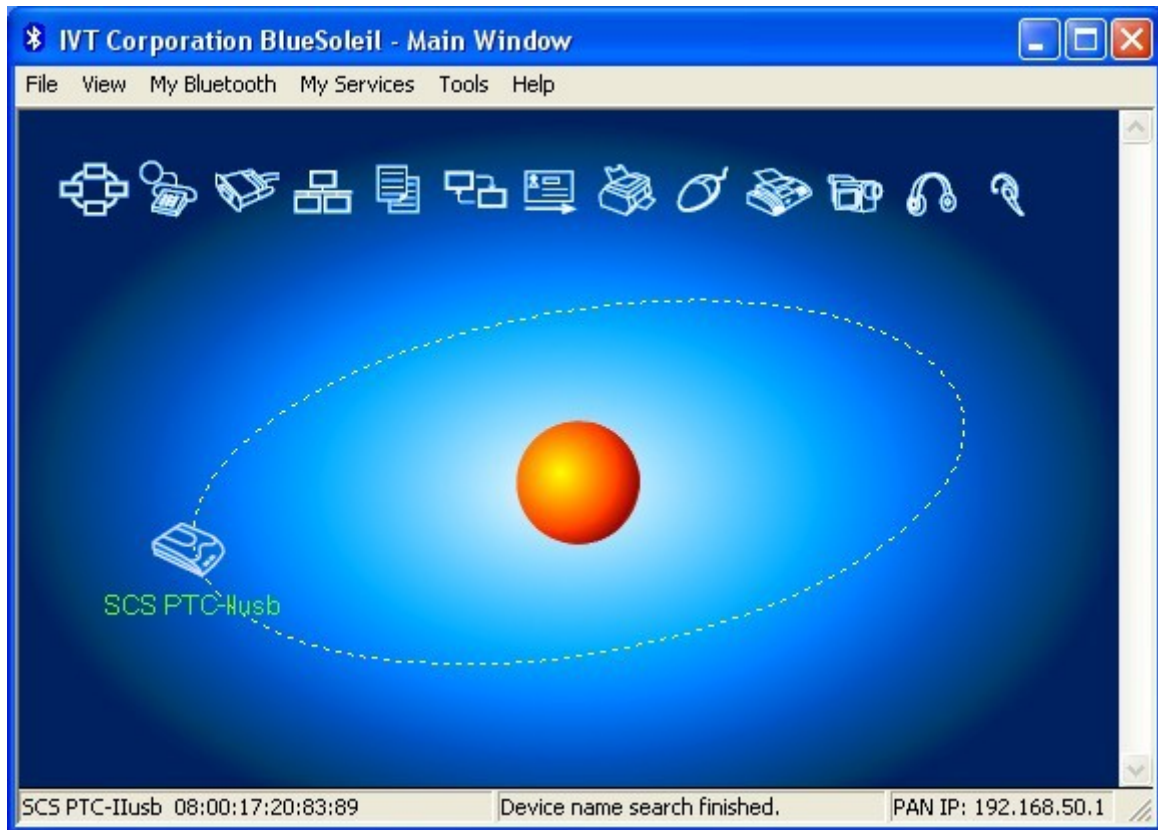
After the Bluetooth stick has been plugged into a free USB connector, **BlueSoleil** starts and shows the following user interface screen:



The next step is to search for Bluetooth devices in range:

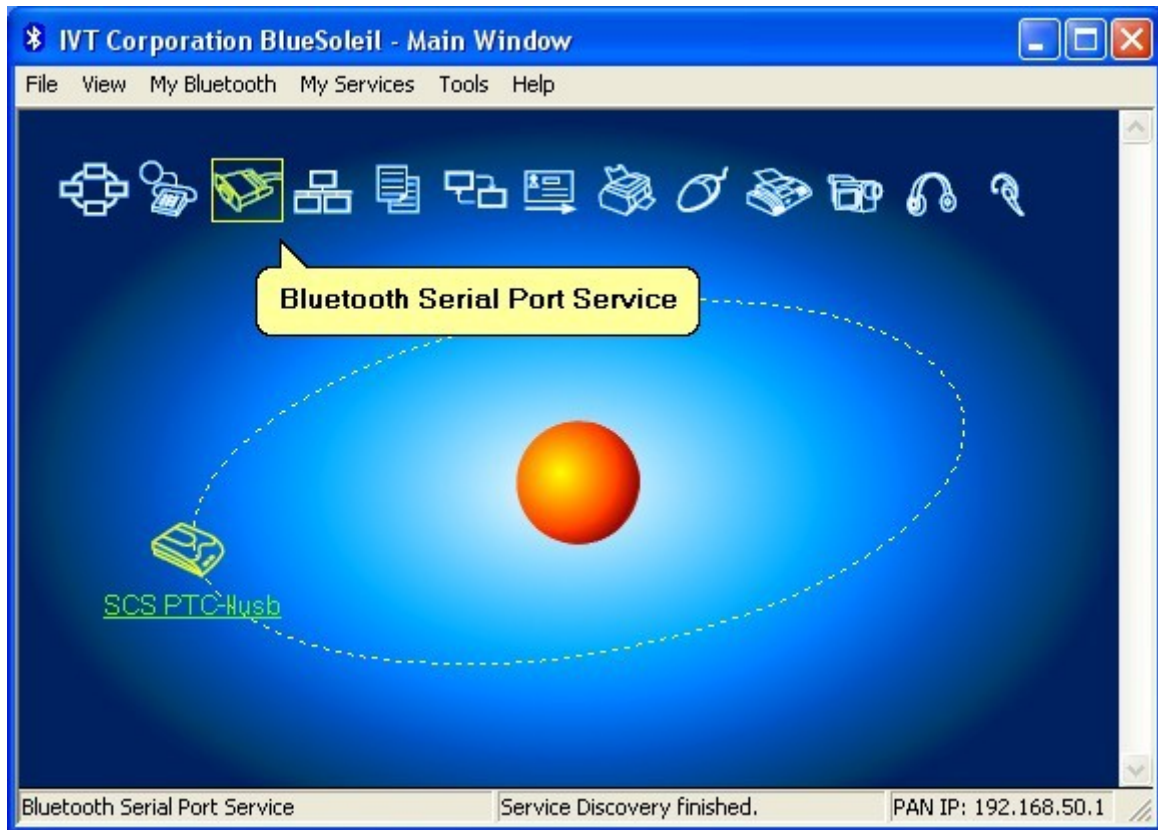


As the picture above shows, the matching item can be found in the pulldown menu „My Bluetooth“. Go there to activate „Bluetooth Device Discovery“.



After some time (about 30..60 seconds) you should see the picture above. As it can be seen, the „SCS PTC-IIusb“ has been detected.

Next step is to identify the service which the found device matches with. The possible services are indicated by the 13 symbols in the upper half of the **BlueSoleil** program screen. Currently none of the services are highlighted. Now make a doubleclick on the symbol of the „SCS PTC-IIusb“. This identifies the service.

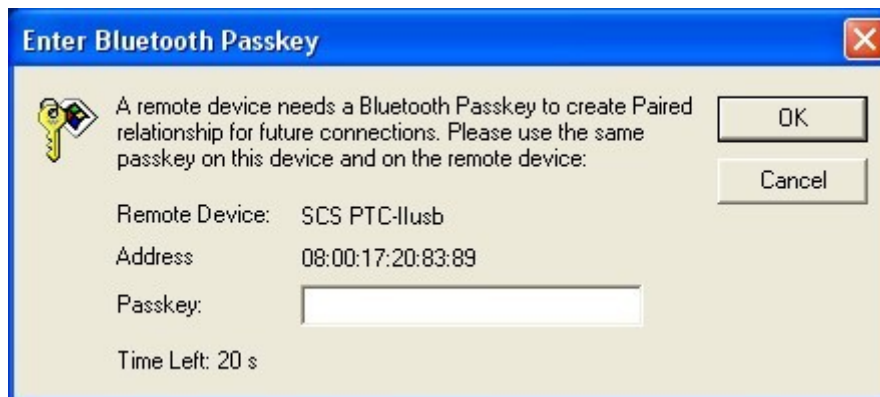


As the picture above shows, the service „**Bluetooth Serial Port Service**“ is identified, which is certainly correct as the Bluetooth connection shall replace a serial connection.

Next step is the so-called „Pairing“. With this, the PTC-IIusb will be subscribed to the PC as valid device to transfer data with.

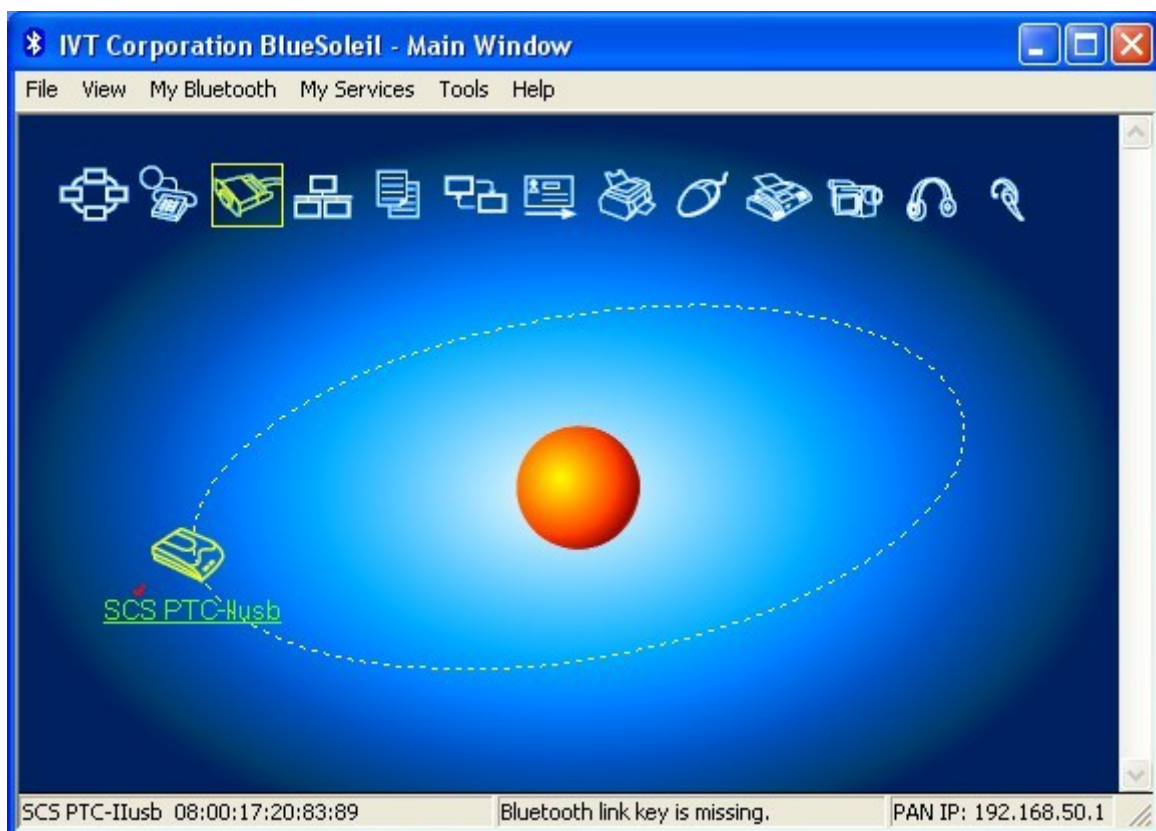


Go with the mouse pointer over the symbol of the „SCS PTC-IIusb“ and press the right mouse button. This opens a menu as shown on the picture above. This menu keeps the item „Pair Device“. Now click with the left mouse button on „Pair Device“. This opens a new window which looks as follows:



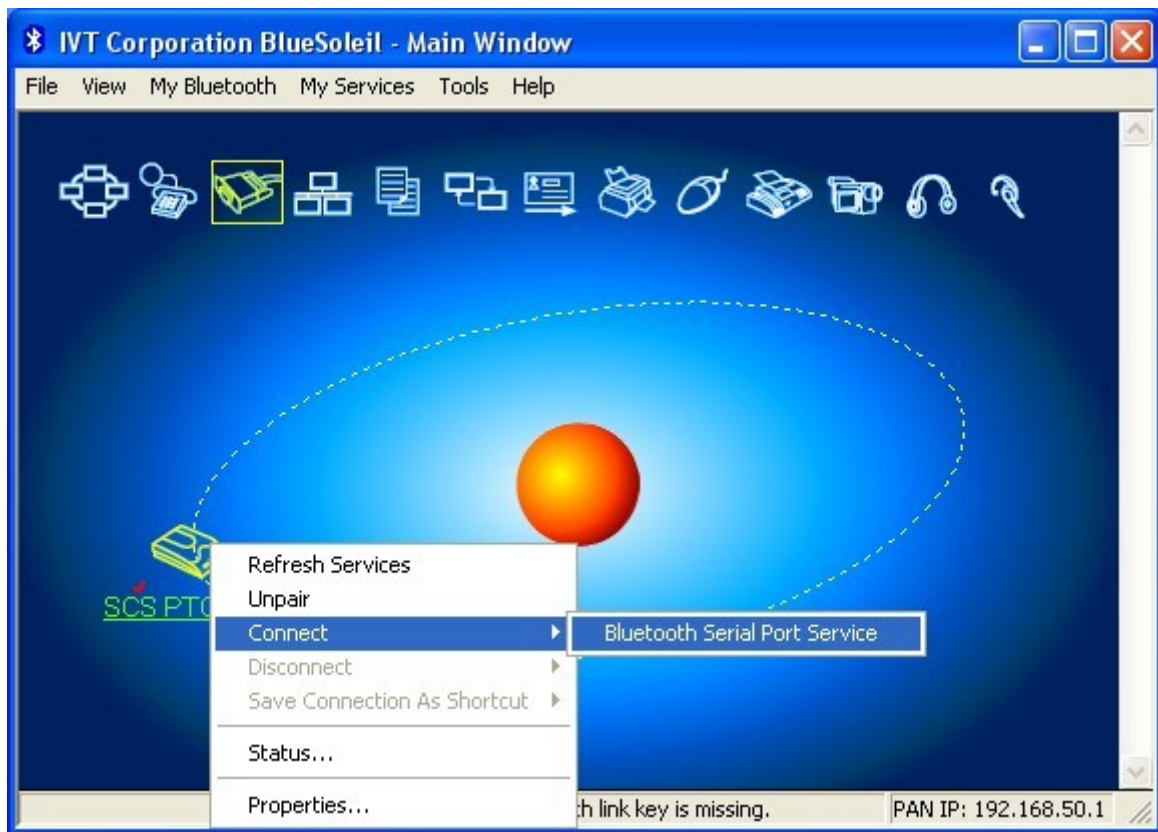
This window enables you to enter the Bluetooth Passkey. Please note that you have just 30 seconds time to do that. If you don't succeed during this given time, you will have to open this window again.

As Bluetooth Passkey you enter the last 8 characters of the serial number of your PTC-IIusb. You find this number on the rear bottom side. **Please take care that you enter all letters in upper case!** After you have finished the entry, press the ENTER key or click on OK.

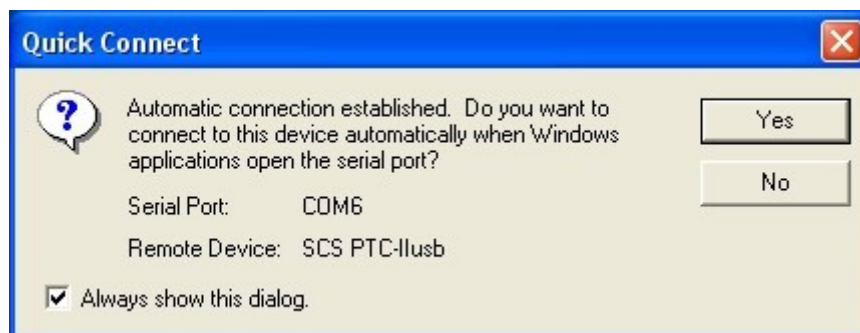


After successful entry of the Passkey, a red hook is shown besides the PTC-IIusb symbol. Disregards the "Bluetooth link key missing" message on the lower part of the window. The Pairing is finished now.

Next step is to activate the serial connection which is done with the help of a virtual COM port, similar to as with USB, which also generates a virtual COM port to communicate.



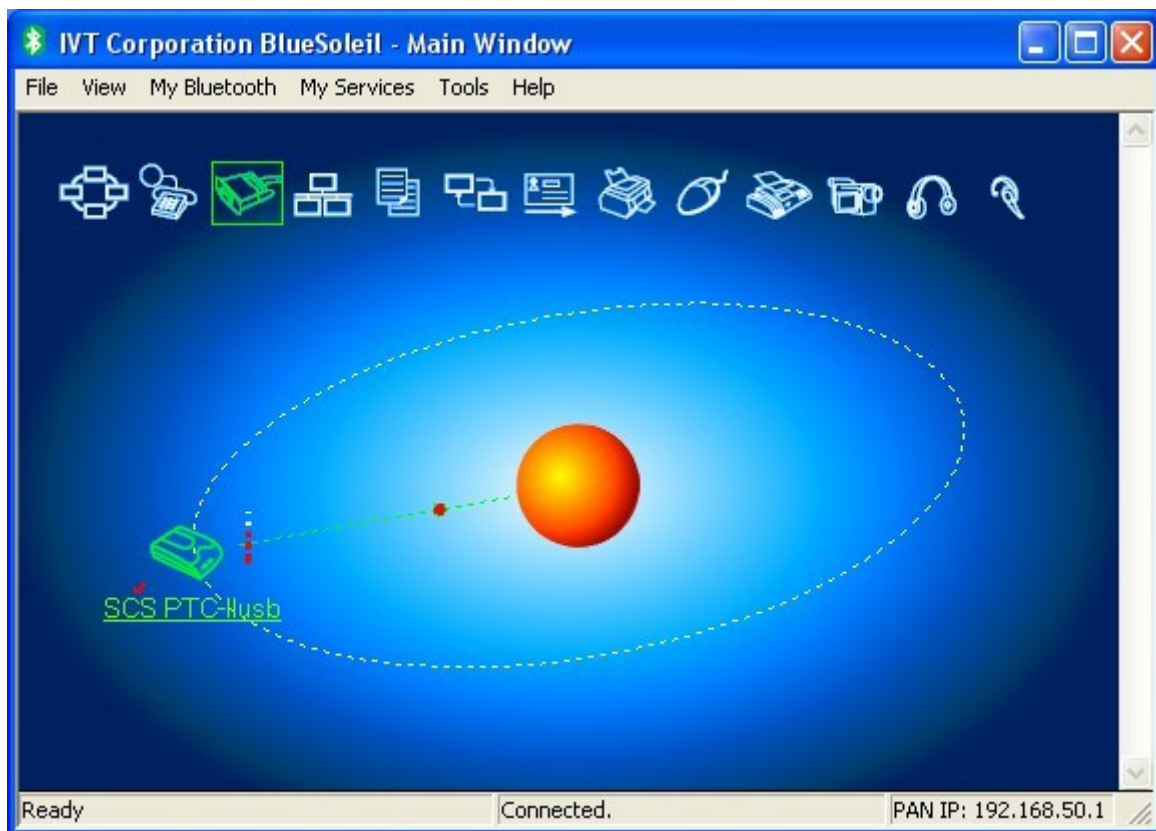
Again, go with the mouse pointer over the symbol of the „SCS PTC-IIusb“ and press the right mouse button. This opens a menu as shown on the picture above. With the left mouse button activate under “Connect” the entry “Bluetooth Serial Port Service”, the way the picture above shows. This will lead to the following display:



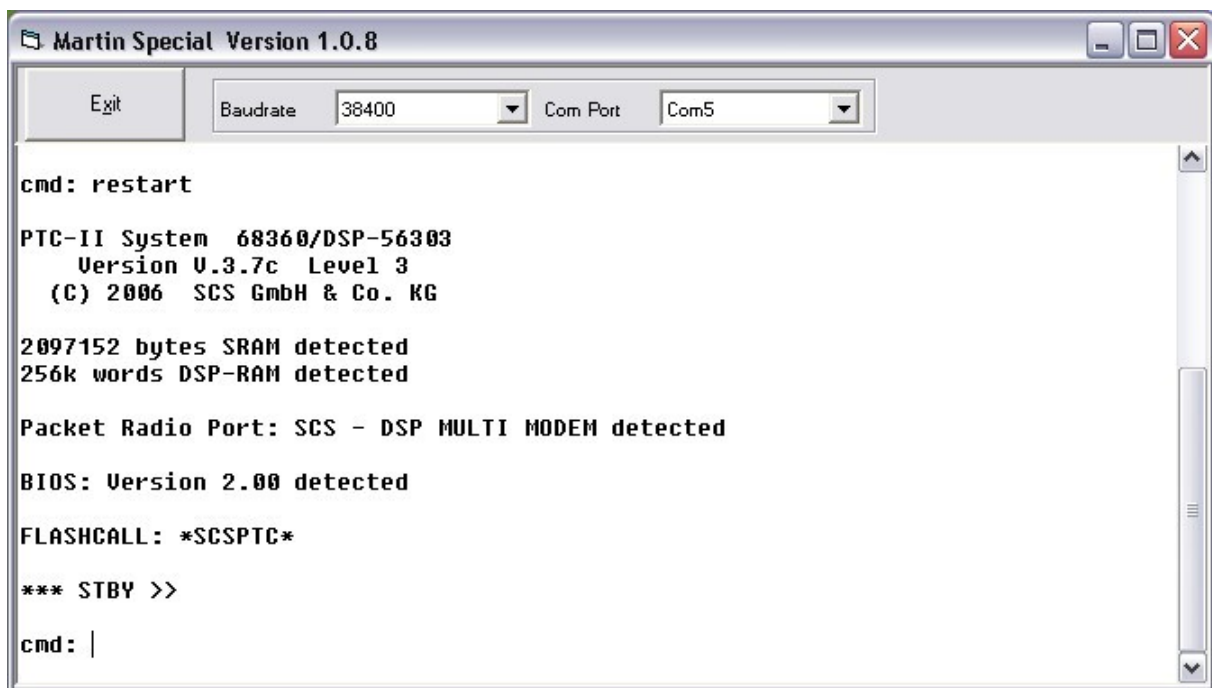
This window shows you that in the current example the virtual COM port COM6 has been assigned for the serial Bluetooth connection to the PTC-IIusb. In your case it could certainly be a different number as well. This COM number will from now on always be used and all terminal programs you use in conjunction with the PTC-IIusb must be set to this COM port. Confirm the displayed window with “Yes”

From now on, when a program starts which is set to COM5, the Bluetooth connection will automatically be established. When the program shuts down, also the Bluetooth connection will be disconnected. Everything is automatic now.

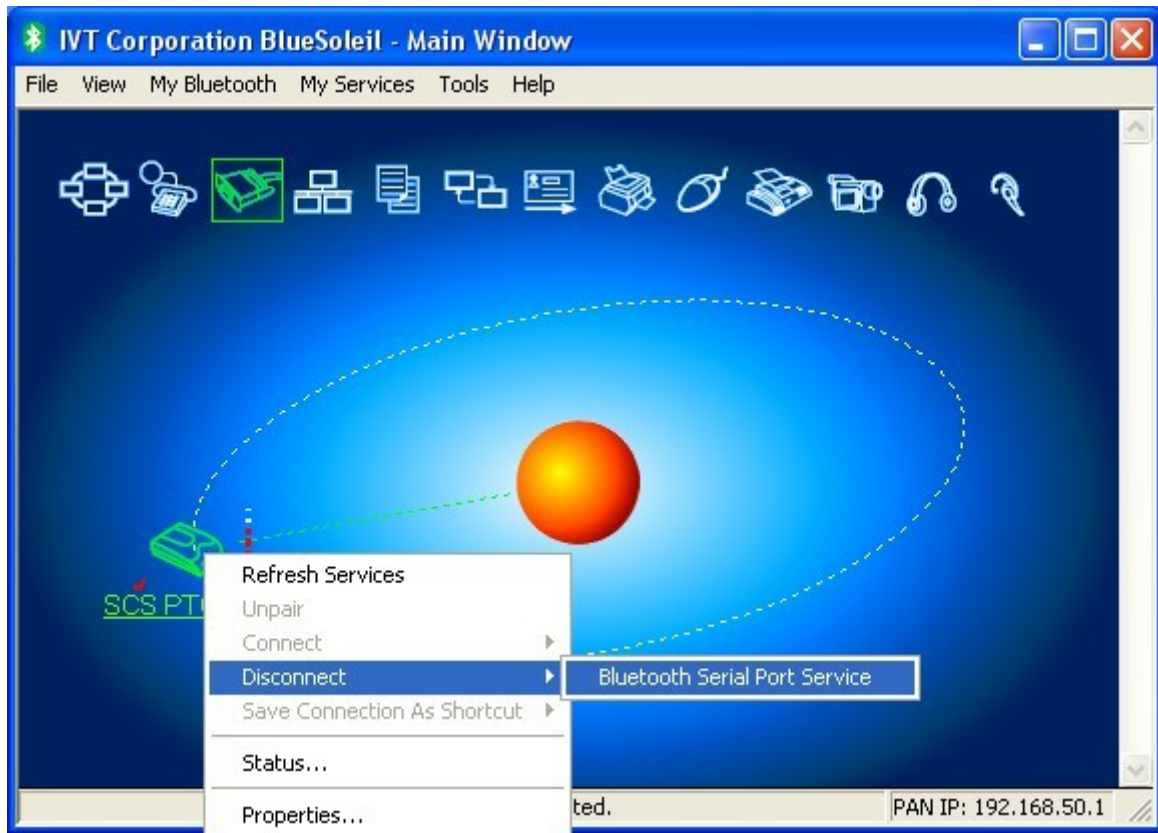
The **BlueSoleil** screen shows an existing Bluetooth connection as follows:



The vertical bar right to the „SCS PTC-IIusb“ symbol indicates the fieldstrange of the Bluetooth connection. A line with a wandering dot on it between the symbol and the center “sun” symbolizes the *connected* condition. When you now open a terminal program and set it to COM5, then you can communicate with the PTC-IIusb. The baudrate you set in this program does not matter:



As the connection has been started manually, you also have to terminate it manually now. Later on this is not necessary any more. As explained above, the connection will be established automatically as soon as a terminal program starts and terminates when the program is closed.



You terminate the connection the same way you started it:
Go with the mouse pointer over the symbol of the „SCS PTC-IIusb“ and press the right mouse button. This opens the well known menu as shown on the picture above.
With the left mouse button activate under “Disconnect” the entry “Bluetooth Serial Port Service”. This disconnects the Bluetooth connection. Before you disconnect you should verify that no terminal program is still using the COM port.